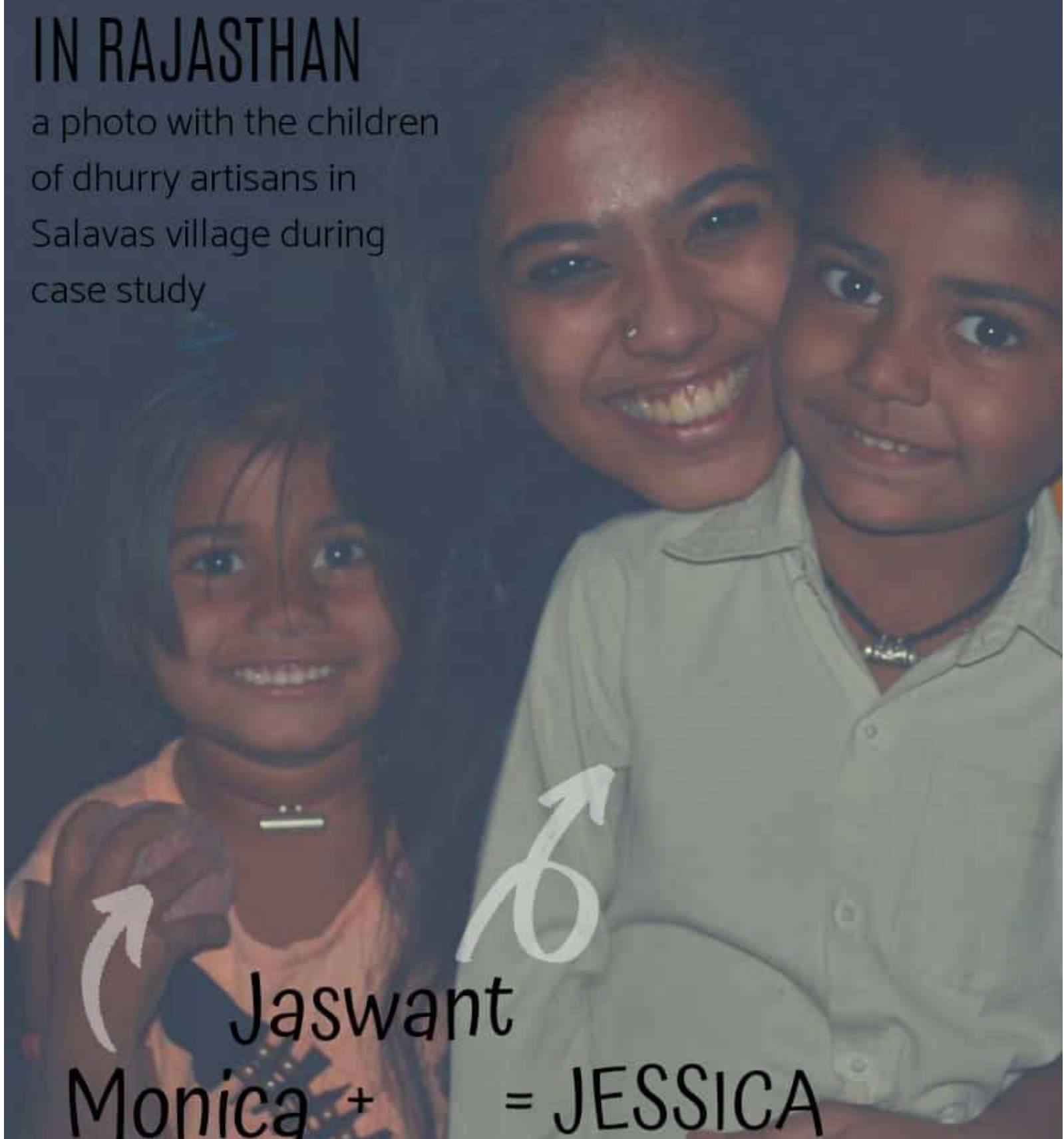


# JESSICA

## DESIGN OF A TEXTILE INDUSTRY IN RAJASTHAN

a photo with the children  
of dhurry artisans in  
Salavas village during  
case study



Jaswant  
Monica + ♂ = JESSICA

in the loving memory of these two, and many more such kids

# JESSICA

Can art have a form?

Can it have feelings?

Can it have an expression?

It definitely has a representative.

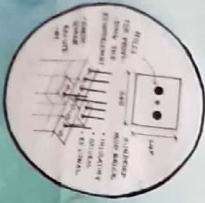
An ARTISAN.

He has form, feelings, expressions and an world to deal with. Can Art and Artisan be separated? They need each other just equally. Like the threads of a cloth weave amongst themselves-interlinking and binding each other, the artisan and art are bound.

The world of loom weaves the threads of art, artisans, their families, traditions and the society together. Even if a strand breaks, the cloth has a hole. Inevitably, the weave has to go on to make a cloth. The artisans, their families (children- the next generation) and all the students of trained art need to continue this weave. Let no scissor cut the threads till the cloth is ready.

Keeping all the pollutants away, enriching each thread of the cloth, this textile industry emerges.

# JESSICA



WEAVE PATTERN

CUSTER TOVATION

ADAPTED IN BOTH PLAN & ELEVATIONS.

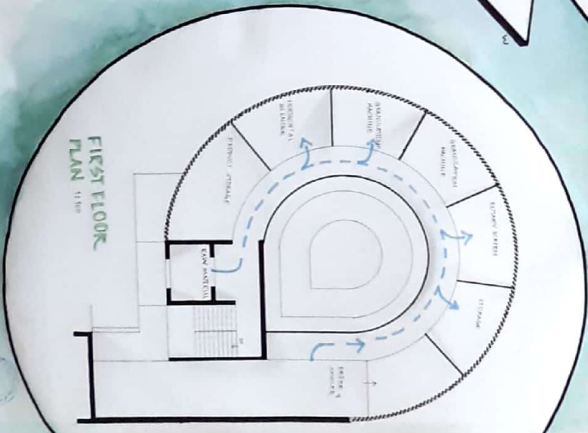
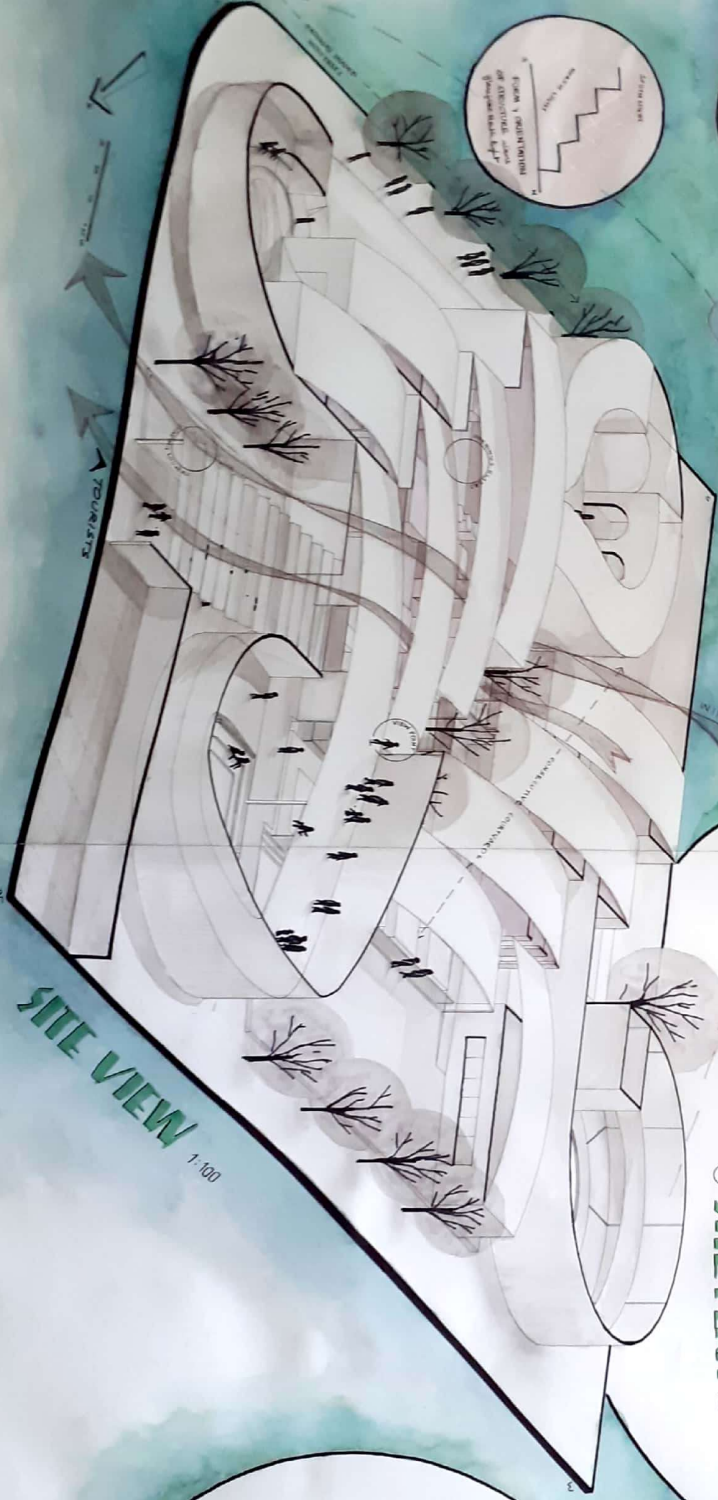
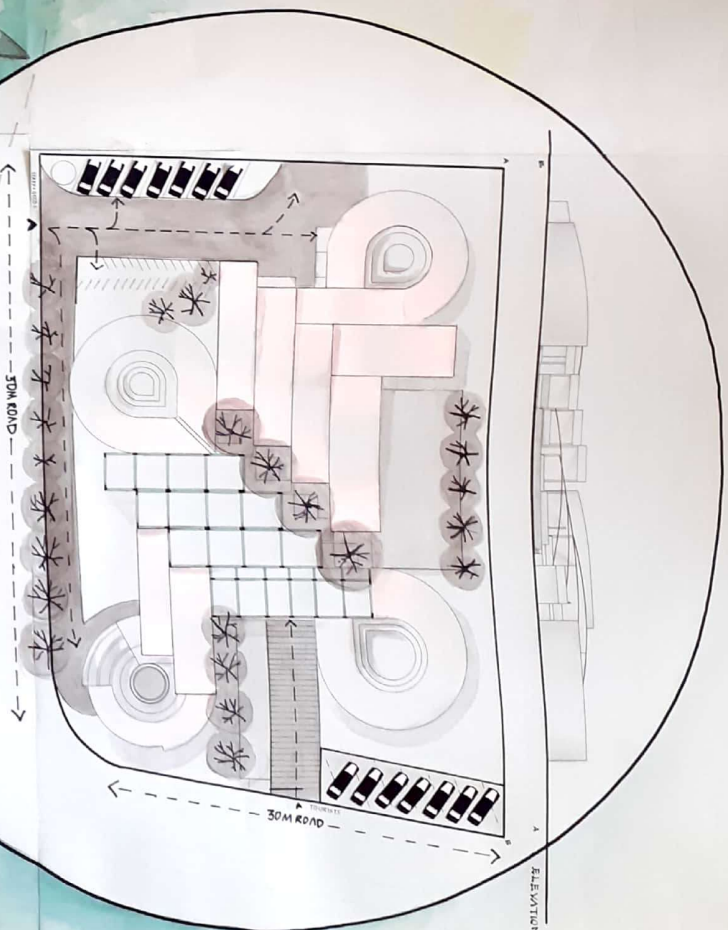
WITH SPECIAL EDGE AND COURTS OF PAULI EDGE.

SUN PATH

CIN

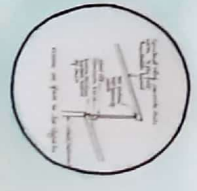
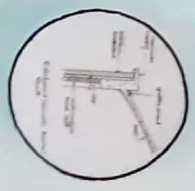
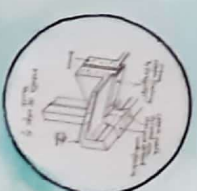
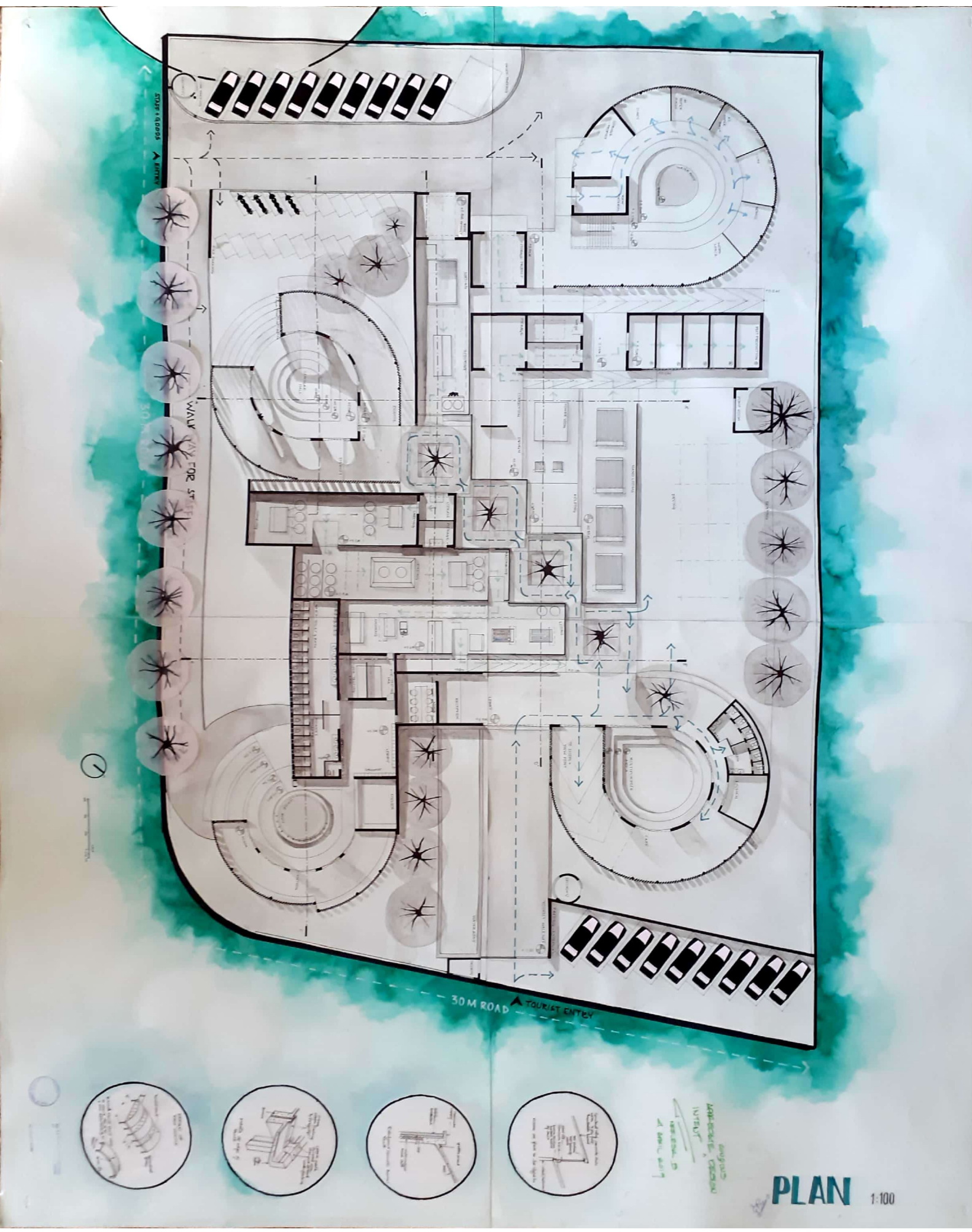


ELEVATION



CONCEPT





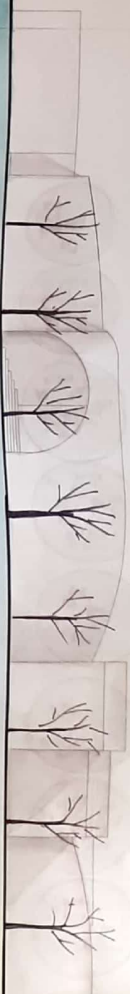
Hand-drawn architectural site plan showing building layout, parking lot, walkways, and landscaping. Includes a north arrow and scale bar.



SECTION AA



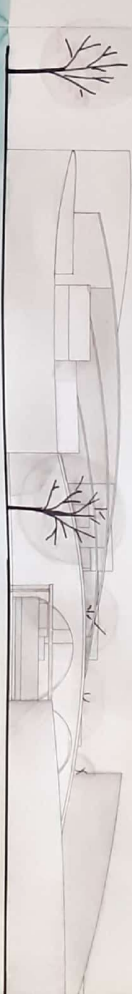
FROM STAFF WALKWAY



SECTION B-B



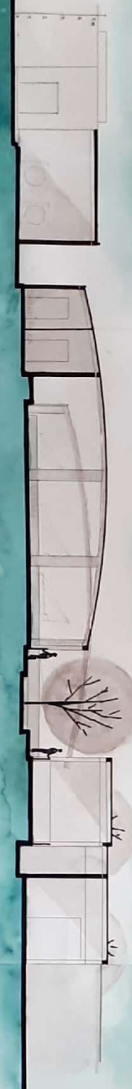
FROM TOURIST ENTRANCE



SECTION C-C



SECTION D-D



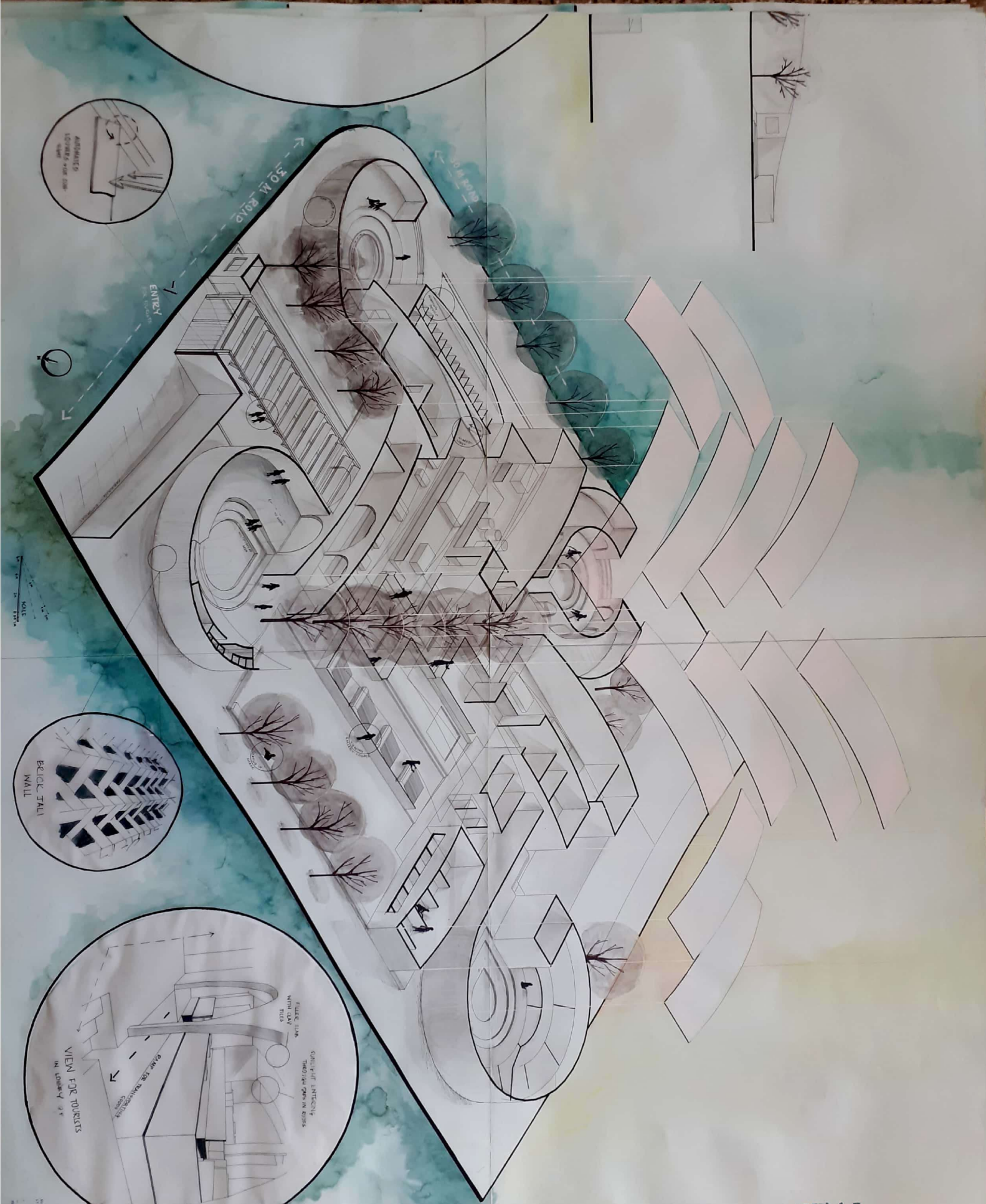
SECTION E-E



# ELEVATIONS







30 M. ROAD

ENTRY

PUBLIC TALK MALL

VIEW FOR TOURISTS

ISOMETRIC VIEW 1:100



FINAL PRESENTATION





# SEMESTER 4