

This 3D loop scooping its way through the 2 major blocks connects them in an interesting manner. Levels of different areas with a tree at centre provides an indigenous and equal platform of exchange in thoughts.

The canopy area acts as a drop off for office employees, as a format event space and much more. To make this space habitable, the technology of Kinetic Panels is very aesthetically employed here.

Details, sections, views

SECTION Q



The Float- a highlight in the campus where an artist goes to, when he needs to breathe, to get inspiration or when he feels he's on top of the world- a place to celebrate victory & a symbol of his Journey.

SECTION P



SECTIONAL 3D

- See view
- BRUTALIST
 - MODERN
 - CLASSICAL
 - KINETIC-PARAMETRIC CANOPY
 - LONG SPAN
 - INDIAN-DRAVIDIAN
- STYLES OF ARCHITECTURE**
In one campus to see, learn and implement



BACKGROUND STUDY

| | | | | |
|--|--|---|--|---|
| TRAFFIC congestion on NH4, so diversion road is used for site access | SOIL clayey to laterite & red soil variety | TEMPERATURE & RAIN Hot and Dry Climates with avg. 3679mm rain | VEGETATION Onsite- Sparse and negligible | WINDS Local winds aren't highly influential |
|--|--|---|--|---|

Antara

ಅಂತರ - ಅಂತರ (Kannada)
a dialogue in between the lines

Antara means "conjunction"; it is used to display the emotions and beauty of any form of Art, especially, music. It is the intermediate space, a symbiosis in itself that makes the composition meaningful.

The city of Bangalore, busy in its ambitious crowd has always had a rhythm in its flow- from 9-5 work shifts, there's the other 5-9; from beautiful independent villas to enormous skyscrapers- it makes space for all. The heavy traffic on NH4 and the busy public in their towers, look up to the limitless sky as a common goal. The Sky brings the clouds, the rain, the light and one collective inspiration for all. The vast pause brings peace.

So, once in a while, when there is a pause, people draw inspiration. A pause is a space, a canvas to draw, build and inspire; to create a loop of self-sufficiency. This site is literally a pause in a busy city- a perfect spot for an architect to draw inspiration within and even radiate out. The design aims to reach heights, with strong foundations and a barrier-free wandering. It replicates the character of the city at large and an architect in essence. From Botanical gardens of Bangalore to Brick sizes in Buildings, everything, at all scales craft the experience in the campus. It stands as a laboratory of different materials and architectural styles woven together as a social and educational fabric for its respective users to seek an experience of each, in itself - an Antara in between the continuous lines, bridging the gap between learning and practice in the real world.

Building as - tentacle sheet, material lab

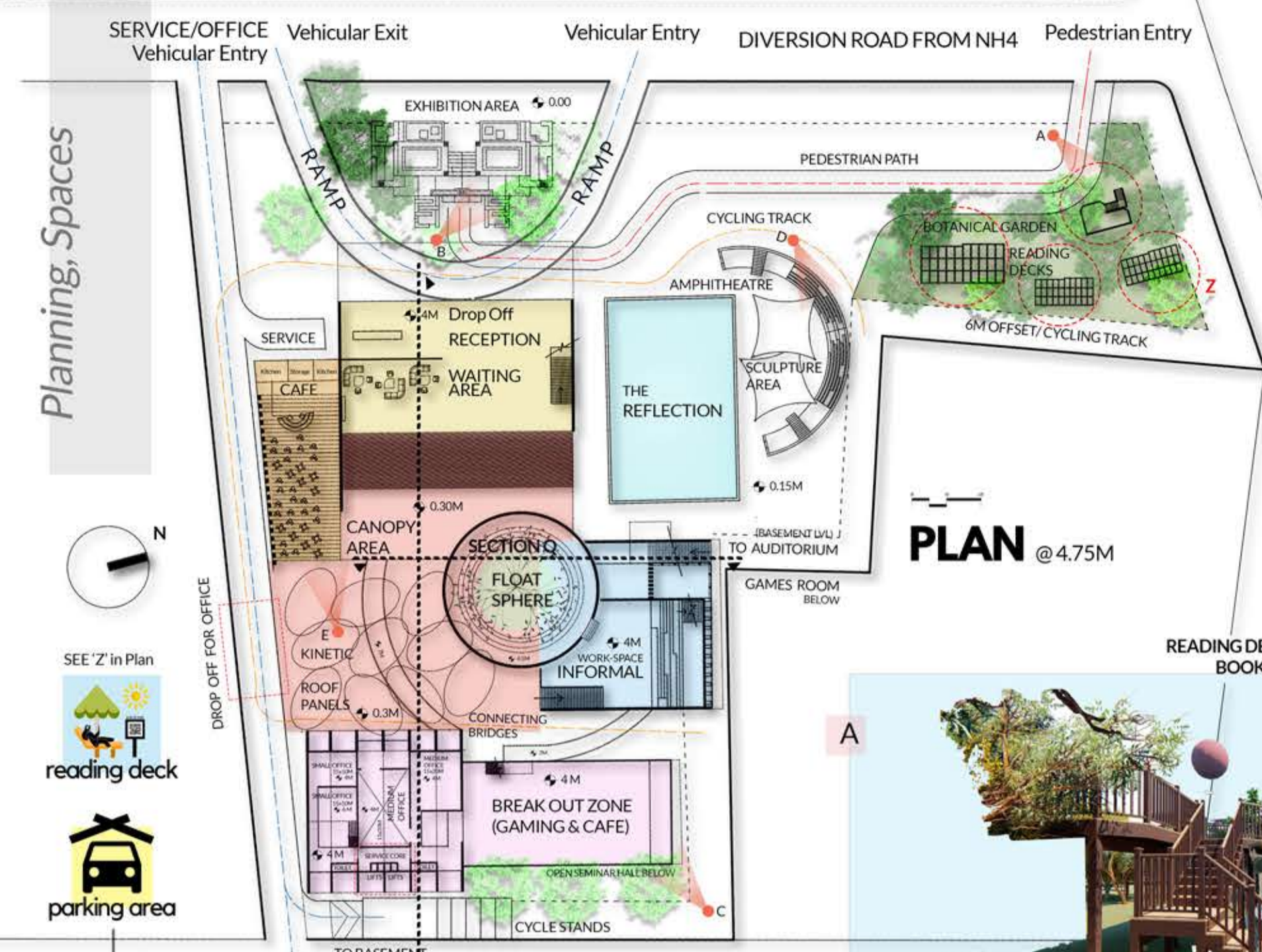
jack arch roof - Designed with integration of Forms & Styles of Architecture

inside out zones - architectural styles, cross ventilation

mutual shading - through built form, closely placed forms, Court yard for light & Socials

Solar responsive - kinetic roof panels, Parametric forms, translucent forms

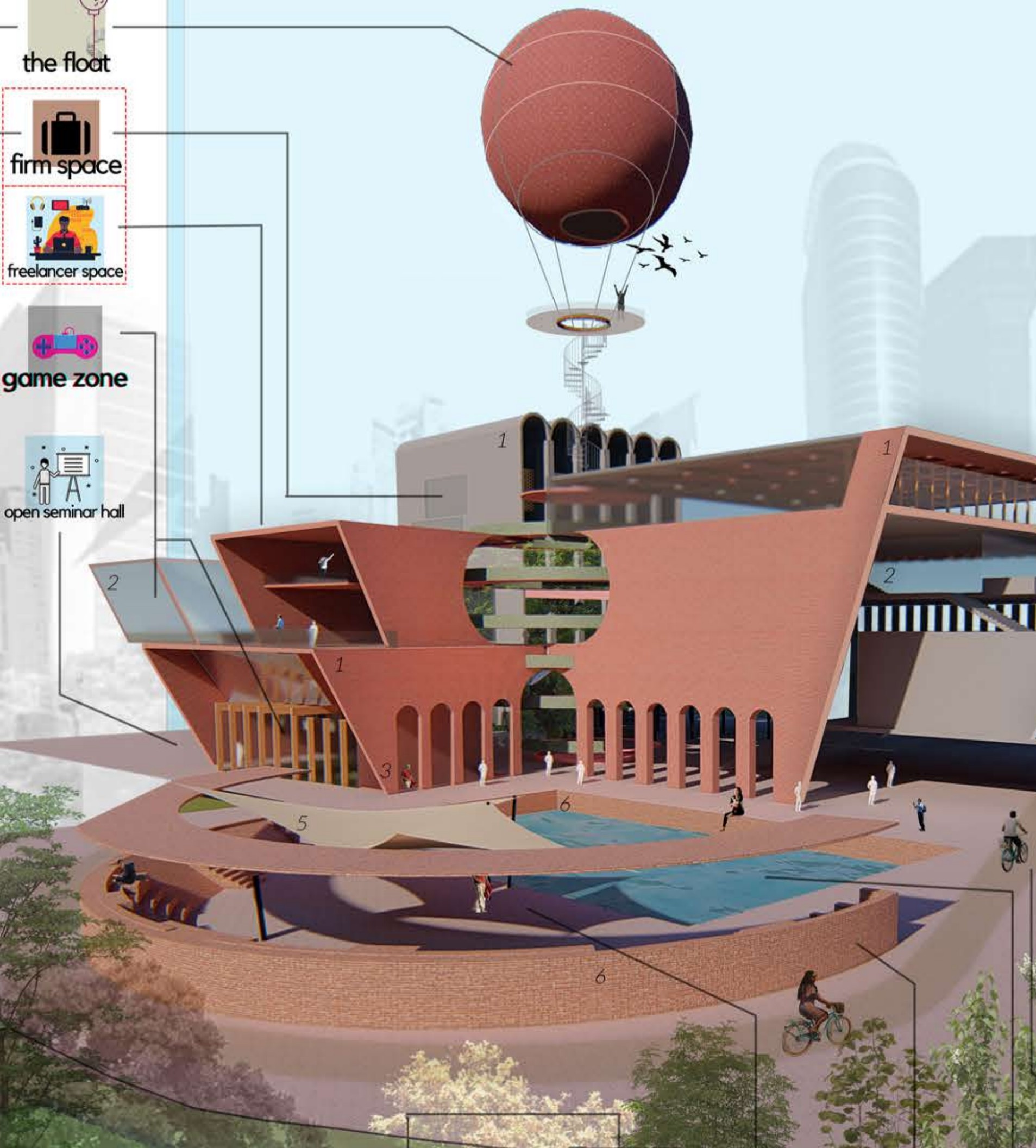
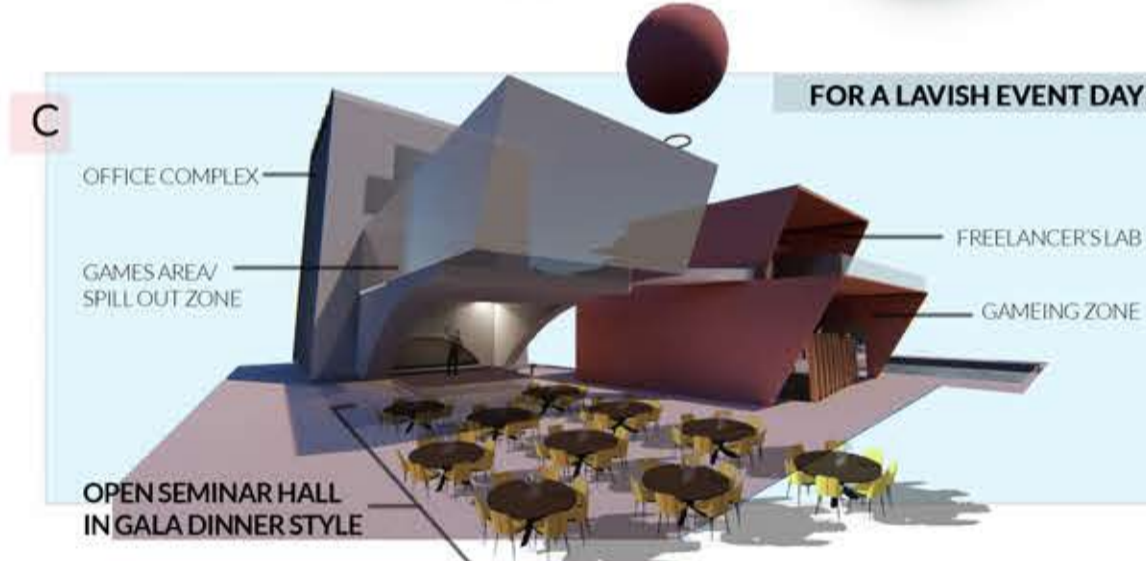
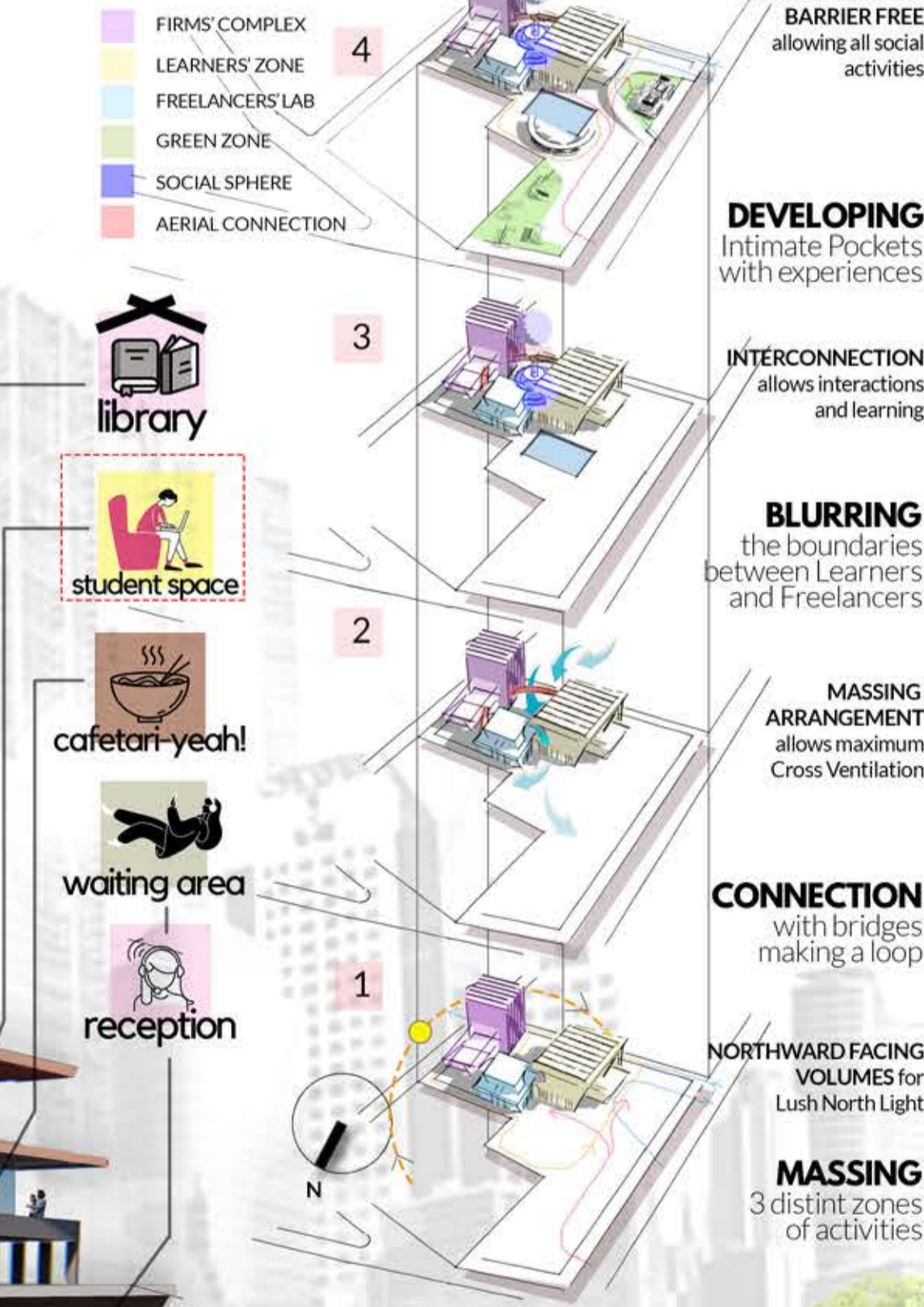
a jugalbandi of architectural styles and materials



- MS20B1609**
- BOTANICAL GARDEN READING DECKS
 - CAFETERIA KITCHEN & DINING
 - COMMON AREA FLOAT SPHERE & KINETIC PANEL CANOPY
 - THE REFLECTION WATERBODY
 - FREELANCER'S G- GAMING ZONE 1- INFORMAL WORK 2- WORK SPACE 3- MEZ-MEETINGS
 - LEARNER'S ZONE 1- RECEPTION 2- LEARNING LAB 3- LIBRARY+ LAB for Models
 - FIRMS & OFFICES G- STATIONARY-PRINT 1- BREAK OUT ZONE 1-8 OFFICES



MASSING



ESSENCE OF "THE REFLECT":
AS THE WATER REFLECTS THE STILL STRUCTURES, AND THE SKY, DYNAMICS OF PEOPLE COME TO PLAY.

A SPECTACLE OF INSPIRATION IN THE BUSY, GREEN CITY OF BANGALORE



*NATIVE SCULPTORS- ARTISANS OF HAMPI, MYSORE, BADAMI